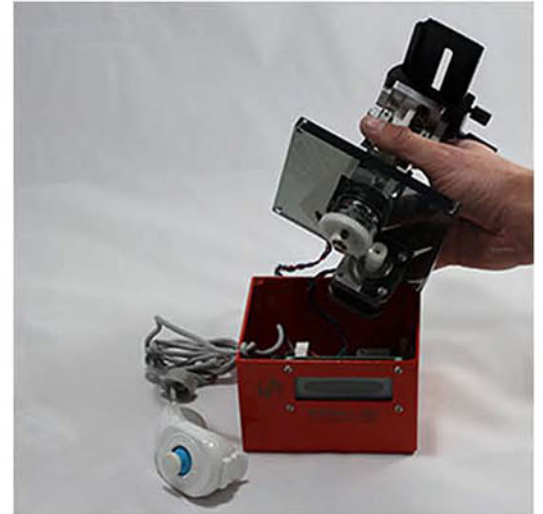


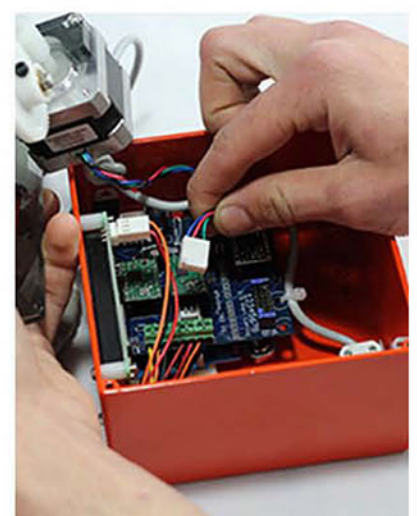
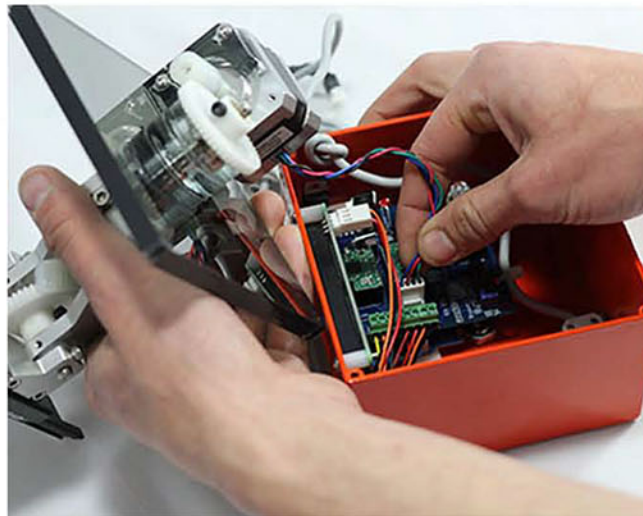
eMotimo TB3 Wired/Wireless Remote Assembly Instructions

Before you start your wired/wireless remote assembly process you should have the following items: New remote, 2mm Hex Key (included in original TB3 Orange package), 1 Zip tie (if assembling a wired remote), double sided tape, and a cutting tool.

Step 1: Remove 4 screws connecting TB3 acrylic top-plate to metal box.



Step 2: Detach motor cable from TB3 Orange board. Remove entire top plate.

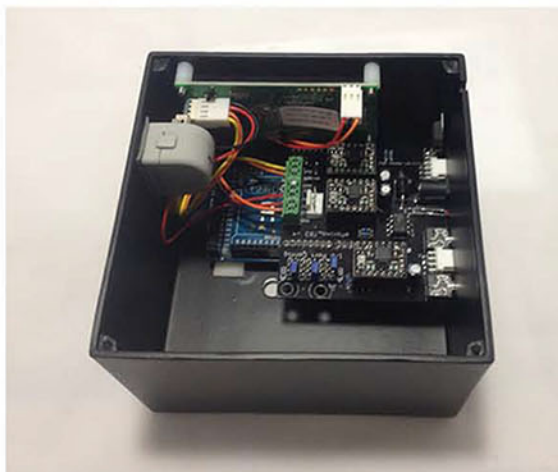


Switching from wireless to wired remote

Step 3 (switching to wired remote):

Detach the wireless module from the metal box and remove it from molex connector/small PCB.

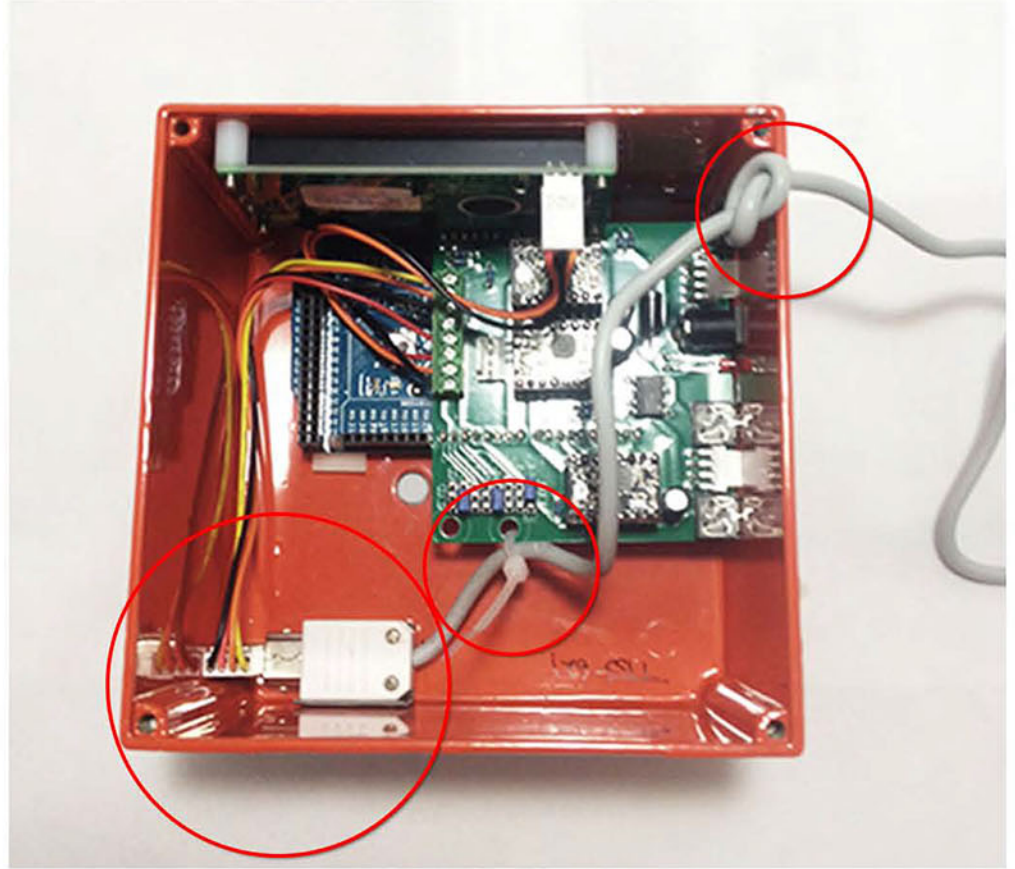
Note: Double stick tape is strong. It will take some force to remove.



eMotimo TB3 Wired/Wireless Remote Assembly Instructions

Step 4 (switching to wired remote):

Apply double stick tape to plastic end of wired remote. Attach wired remote to molex connector/small PCB. Orient the molex connector against a surface (this gives the connector more stability) and stick to metal box. Zip tie the remote wire to circuit board as shown in image to the right. Add a knot in the wiring for strain relief and thread through slot on side of metal box.

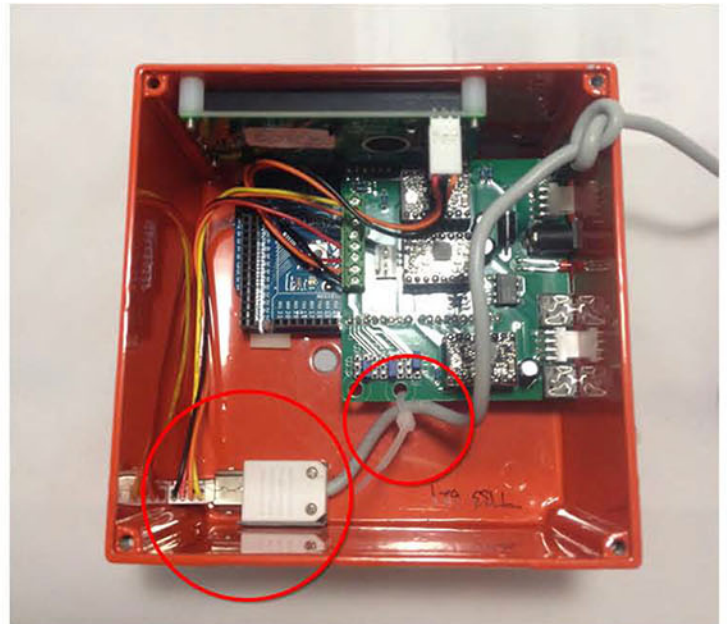


Switching from wired to wireless remote

Step 3 (switching to wireless remote):

Cut zip tie attaching the wired remote to the circuit board. Detach the wired module from the metal box and remove it from molex connector/small PCB.

Note: Double stick tape is strong. It will take some force to remove.



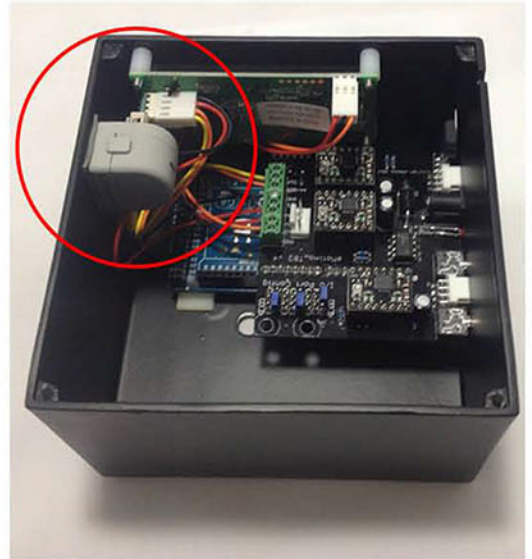
eMotimo TB3 Wired/Wireless Remote Assembly Instructions

Step 4 (switching to wireless remote):

Apply double stick tape to wireless module of the wireless remote. Attach wireless module to molex connector/small PCB. Orient this connection with molex connector against a surface (this give the connector more stability) and stick to metal box. We place it against the LCD as seen to the right.



Disregard box color



Correct Assembly

Step 5: Repeat steps 1 and 2 in reverse order.

